

TE OHU
KAIMOANA


Kaimoana Workshop Strategy
for AHC Directors & Managers with MIO Representatives & Managers
25-27 November 2009, Travel Lodge Hotel, Wellington



Ka hua ki tai - Ka ora ki uta

TE OHU
KAIMOANA

PATAKA / WHATA




Ka hua ki tai - Ka ora ki uta

TE OHU
KAIMOANA

Introductions

Participating Taranaki iwi:

- Ngati Ruanui
- Nga Rauru Kiihahi
- Taranaki Tuturu



Commercial Fishing Operation:

- Egmont Seafoods Ltd

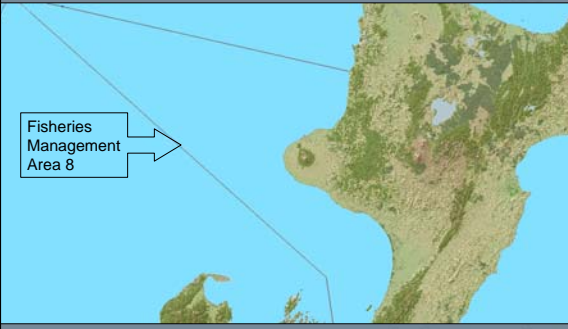
Assisted by:

- Te Ohu Kai Moana Trustee Ltd

Ka hua ki tai - Ka ora ki uta

Quick overview of PATAKA / WHATA

Fisheries
Management
Area 8



PATAKA / WHATA

Two Permit - Four Step Process

PATAKA IN

1. Initiating a customary harvest
2. Catch landing and processing
3. Storage for later use

PATAKA OUT

4. Access and distribution for customary use

Quick overview of PATAKA / WHATA



Quick overview of PATAKA / WHATA



PATAKA / WHATA

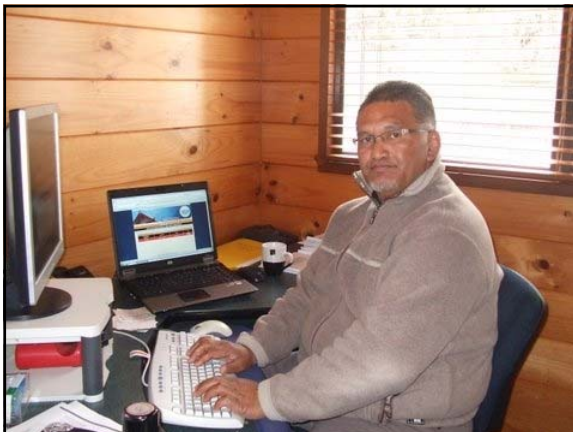
Two Permit - Four Step Process

PATAKA IN

1. Initiating a customary harvest
2. Catch landing and processing
3. Storage for later use

PATAKA OUT

4. Access and distribution for customary use











PATAKA / WHATA

TE OHU
KAIMOANA

Two Permit - Four Step Process

PATAKA IN

1. Initiating a customary harvest
2. **Catch landing** and processing
3. Storage for later use

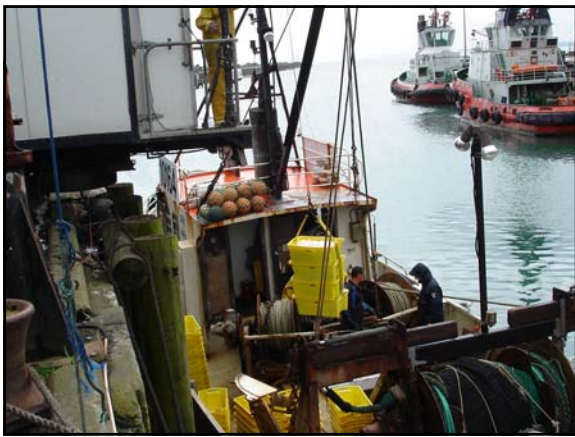
PATAKA OUT

4. Access and distribution for customary use

Ka hua ki tai - Ka ora ki uta















PATAKA / WHATA

TE OHU
KAIMOANA

Two Permit - Four Step Process

PATAKA IN

1. Initiating a customary harvest
2. Catch landing and **processing**
3. Storage for later use

PATAKA OUT

4. Access and distribution for customary use

Ka hua ki tai - Ka ora ki uta











PATAKA / WHATA



Two Permit - Four Step Process

PATAKA IN

1. Initiating a customary harvest
2. Catch landing and processing
- 3. Storage for later use**

PATAKA OUT


4. Access and distribution for customary use

Ka hua ki tai - Ka ora ki uta








Ngati Ruanui
 Customary Fisheries Management System


PATAKA IN

PATAKA AUTHORISATION FINAL STORAGE

Authorisation Number: 2009081NR Fishstock: SNAB
 Processed Amount: 134.00 Kgs Final State: Select a State
 Carton Number: 772 Carton Size: 10Kgs
 Date Packed: January 2009

FINAL STORAGE

Fishstock	Landed State	Landed Weight(Kgs)	Final State	Weight Processed	Cartons	Date Packed
SNAB	GRE	237	SKF	82.40	9.24	12/11/2009
SNAB	GRE	237	HFR	134.00	7.72	12/11/2009


Ngati Ruanui
 Customary Fisheries Management System

PATAKA IN

LIST OF AUTHORISATIONS TO TAKE FOR PATAKA/WHATA

LIST OF AUTHORISED HARVESTS AND CONDITIONS

Authorisation Number	Date Authorised	Issued To	Status	PDF
2009081NR	03/11/2009	Receiver 10164	FINAL STORAGE	



PATAKA / WHATA

Two Permit - Four Step Process

PATAKA IN

1. Initiating a customary harvest
2. Catch landing and processing
3. Storage for later use

PATAKA OUT

4. Access and distribution for customary use

Ka hua ki tai - Ka ora ki uta

Ngati Ruanui
Customary Fisheries Management System

PATAKA OUT
LIST OF AUTHORISATIONS TO REMOVE FISH FROM PATAKA/WHATA

Authorisation Number	Date Authorised	Holder	Removal Date	Status	PDF
3009050NR	20/11/2009	Sam Tamarapa	20/11/2009	AUTHORISED	
3009050NR	20/11/2009	Sam Tamarapa	20/11/2009	Click to load record into the form	

[Menu](#) | [Edit](#) | [New](#) | [Delete](#) | [Authorise](#) | [Upload](#) | [Complete](#)









TE OHU
KAIMOANA

PATAKA / WHATA

Two Permit - Four Step Process

PATAKA INVENTORY

Ka hua ki tai - Ka ora ki uta

Authorization Number	Fishstock	Authorized State	Authorized Amount	Landed State	Landed Amount
200908198	SNAB	GRE	250	GRE	237

PATAKA / WHATA

TE OHU
KAIMOANA

Participating Taranaki iwi:

- Ngati Ruanui
- Nga Rauru Kiiitahi
- Taranaki Tutura



Commercial Fishing Operation:

- Egmont Seafoods Ltd

Assisted by:

- Te Ohu Kai Moana Trustee Ltd

Ka hua ki tai - Ka ora ki uta

TE OHU
KAIMOANA

Kaimoana Workshop Strategy

for AHC Directors & Managers with MIO Representatives & Managers
26-27 November 2009, Travel Lodge Hotel, Wellington



Ka hua ki tai - Ka ora ki uta
