



GLOBAL FISHERIES SCHOLARSHIP

INFORMATION PACK AND APPLICATION FORM 2010

CLOSING DATE: 4 MARCH 2009

CONTENTS

Introduction	2
What the Global Fisheries Scholarship Covers?	3 - 5
Application Process	6
Appendix A	
- Application Form	7 - 12

INTRODUCTION

This pack contains:

- Information on the Global Fisheries Scholarship, a training and development programme based in Japan; and
- The application form.

The Global Fisheries Scholarship is a jointly funded training and development venture between Te Ohu Kai Moana Trustee Limited (Te Ohu Kaimoana) of New Zealand and international fishing company, Nippon Suisan Kaisha. Limited (Nissui) of Japan.

This prestigious scholarship focuses on developing business, science, operational and technology skills of Maori for the fisheries and seafood industries in New Zealand. Successful candidates will travel to Japan to complete training and study in their chosen field of development.

The duration of the stay in Japan will vary depending on the experience and qualifications of each successful candidate, however it will not be less than 5 months or more than 12 months. Up to two scholarships will be awarded for 2010.

If you are Maori, with a serious interest or some experience in the seafood industry or international relations and want to take your career to the next level, or a graduate looking to build a career in the fisheries and seafood industries apply now for the Global Fisheries Scholarship. Applications close at 5pm, Wednesday 4 March 2009.

WHAT THE GLOBAL FISHERIES SCHOLARSHIP COVERS?

1.0 Japanese Language Training

- 1.1 As soon as possible after the successful candidate(s) are selected as the Nissui Global Fisheries Scholars, Te Ohu Kaimoana will arrange and pay for the scholars to receive Japanese language training in New Zealand until they begin their placement in Japan.
- 1.2 An expectation of this training is that the scholars will sit and pass the Japanese language proficiency test level 4 before departing to Japan.
- 1.3 This training will require the scholars to commit a minimum of four hours of study per week.

2.0 Sealord Group Limited Induction

- 2.1 Prior to placement in Japan, an induction to the industry with Sealord Group Limited will be provided for the scholars.
- 2.2 Te Ohu Kaimoana will pay for travel and accommodation and provide a daily allowance to the scholars for the duration of the induction.

3.0 Scholarship Financial Support and equipment

- 3.1 The scholarship will provide set funds for phone calls to New Zealand while the scholars reside in Japan;
- 3.2 The scholars will also have on loan from Te Ohu Kaimoana, laptops while in Japan.

4.0 Property Storage

- 4.1 The scholarship will cover all removal and storage costs of home contents and storage insurance cover.

5.0 International Travel

5.1 The scholarship will provide:

- a. all costs associated to obtaining trainee visas to Japan,
- b. Economy airfares to and from Japan including one return trip to New Zealand in July to visit whanau, and
- c. Insurance cover.

6.0 Business Travel

6.1 The scholarship will provide for all business related travel within Japan

7.0 Accommodation

7.1 The scholarship will pay for accommodation for the scholars in Japan.

8.0 Allowance

- 8.1 The scholarship will provide a training allowance of 200,000 yen per month to each scholar.
- 8.2 The allowance will be paid by Nissui Head Office at the start of every month during the scholars stay in Japan. The final payment of the allowance will be made in December 2010.

9.0 Training Programme

- 9.1 The commencement date for training in Japan will be negotiated with each scholar however, it is expected that this would be in January 2010. The Global Fisheries Scholarship will finish with a graduation ceremony in December 2010.
- 9.2 The work schedule will be based on a Monday to Friday week.
- 9.3 Te Ohu Kaimoana and Nissui will work with the scholars to ensure the training received in Japan can best meet the their needs within the scope of what Nissui can offer.

10.0 Tangihanga

10.1 In the event of a tangihanga within the scholar's immediate family, Nissui, in consultation with Te Ohu Kaimoana, will arrange travel to and from New Zealand as soon as practicable.

10.2 If the scholar is required to stay longer in New Zealand due to family matters pertaining to the tangihanga, then a discussion with Te Ohu Kaimoana and Nissui must occur at the earliest convenience to decide on the most appropriate action to meet the needs of the scholar and the Global Fisheries scholarship.

11.0 Hardship Provision

11.1 In the event of financial hardship, Te Ohu Kaimoana may be able to offer assistance.

12.0 The scholarship does NOT normally cover:

12.1 The scholar's salary costs while learning Japanese in New Zealand.

12.2 Travel, accommodation and visa costs for partners and family.

12.3 Legal fees and/or other costs associated to breaking laws within Japan.

APPLICATION PROCESS

Forms

Application forms will be available from Te Ohu Kaimoana and on its website of www.teohu.maori.nz.

Information required

The application forms will set out the information required from candidates.

Decision Process

All applications will be assessed immediately following the closing date. Shortlisting and interview processes will occur thereafter with a decision on who are the successful candidates within three weeks of the closing date.

Notification

All candidates will be notified in writing within one month of the closing date.

Contracts

Successful candidates will be asked to enter into a contract that sets out the terms and conditions of the scholarship.

APPLICATION FORM



Instructions: Please fill out this form in dark ink for photocopying purposes and attach pages where required or if there is insufficient space for your answers. To avoid delays in the processing of your application form, please complete **all** section.

Please attach a
Passport-sized
Photo here

SECTION 1

PERSONAL DETAILS

1. Ms/Miss/Mrs/Mr (circle) Full name:

2. Residential Address:

.....

Postal Address (if different from above)

.....

Telephone: Mobile:

Email:

3. Date of Birth:

4. Iwi: 1: 2:

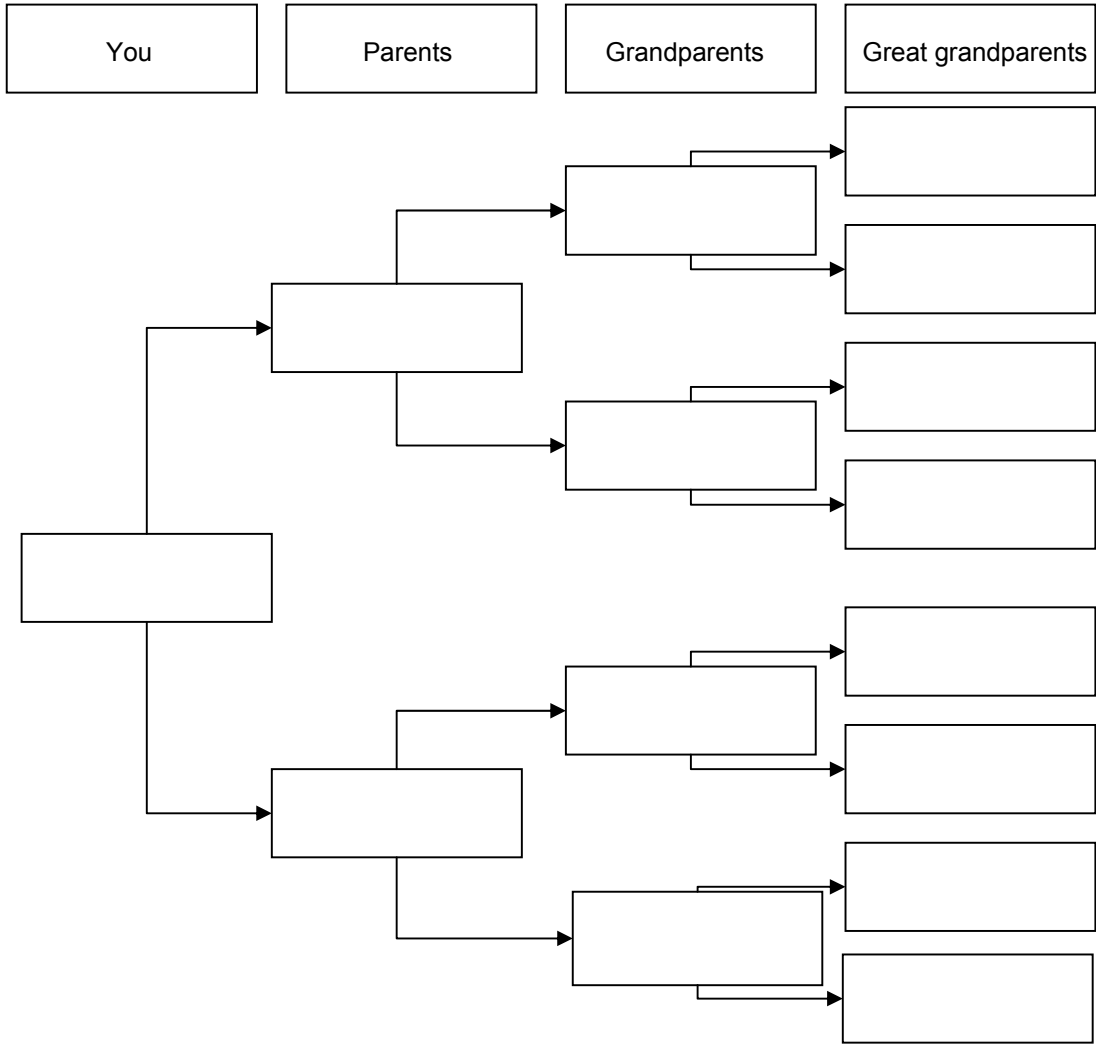
Hapu: 1: 2:

Marae: 1: 2:

Next of Kin's name:

Telephone: Address:

Whakapapa



SECTION 3

FISHERIES / IWI / TE REO

Describe how you will use this experience to contribute to iwi/Maori development; in particular fisheries.

.....
.....
.....
.....

Describe your involvement with the fisheries/seafood sectors:

.....
.....
.....
.....

Outline your commitment to Te Reo:

.....
.....
.....
.....

Please indicate your Te Reo proficiency on the following scale (1 indicating beginners/ 10 indicating fluent)

1 2 3 4 5 6 7 8 9 10

SECTION 4

REFERENCES

Applicants must include at least three written references from people who can comment on the applicants personal qualities, skills and experience in the areas of academic ability and community/iwi involvement

Please attach three written references:

- Academic
- A reference from your Kaumatua/Runanga/Māori Trust Board or other Māori organisation
- A reference from a referee of your choosing

DECLARATION

I declare that the statements made in this application are true and complete to the best of my knowledge and belief.

Signed:

Date:

USE OF INFORMATION

I authorise Te Ohu Kai Moana Trustee Limited and Nippon Suisan Kaisha. Limited to release my name, the course of study and my academic qualifications to the iwi I have listed in Section 1, Question 4, and, to Te Ohu Kaimoana's group of companies. Both companies may also use any details in this form, excluding individual's name for publication and statistical purposes.

Signed:

Date:

CHECKLIST

Before you send your application form ensure that you have:

- Completed all sections as applicable
- Enclosed copies of documents, showing your examination results. Note: You will not be given credit for formal qualifications gained at secondary school or tertiary institutions unless you supply official documentary evidence
- Enclosed any information that is on separate pages
- Enclosed all your references
- Attached passport photo
- Signed the Declaration
- Signed the Use of information statement

All enquires about the application process should be directed in the first instance to:

Darrin Apanui
Te Ohu Kai Moana Trustee Limited
Phone: 04 9319500
Email: darrin.apanui@teohu.maori.nz
Postal: PO Box 3277, Wellington.

Completed applications should be sent to:

Te Ohu Kai Moana Trustee Limited
P.O. Box 3277
Wellington

How did you hear about the Global Fisheries Scholarship?

- Te Ohu Kaimoana website or panui
 - External media (e.g. mana magazine, maori radio, newspapers) please state _____
 - Te Ohu Kaimoana Representative
 - Other (please state) _____
- _____

FOR OFFICE USE ONLY

Your application for the Global Fisheries Scholarship 2010 has been received. You will be notified of the outcome.

Name:

Address: