

FISHERIES MANAGEMENT
WORKSHOP

10 October 2006

Allocation Update and Current Issues

TE OHU
KAIMOANA



[Contents](#)

Allocation Update and Current Issues

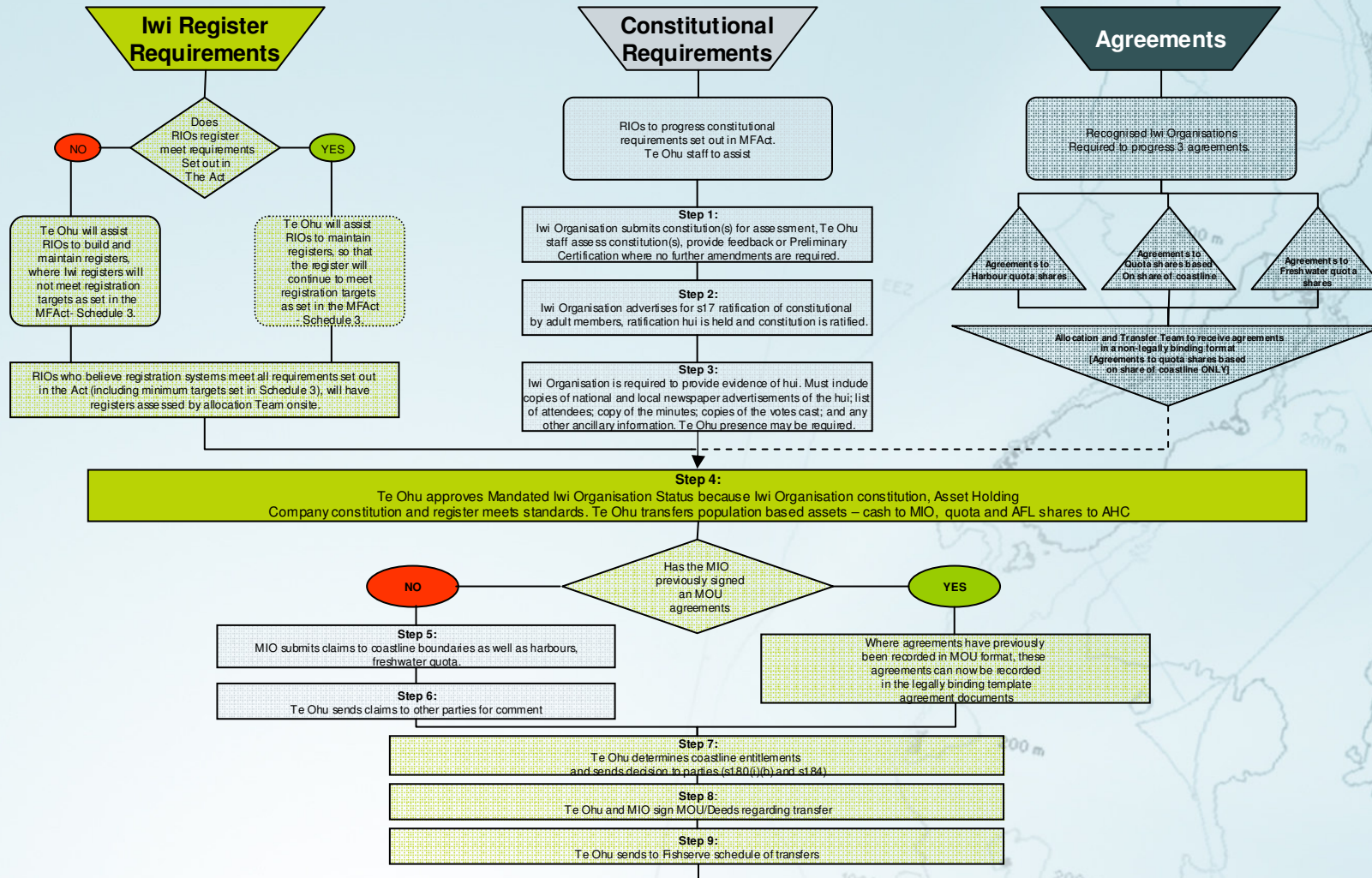
TE OHU
KAIMOANA

1. [Allocation Assessment & Approval Flowchart](#)
2. [Iwi Development](#)
3. [Allocation to Iwi](#)
4. [Residual Allocation
Work Programs](#)
5. [Key ACE Round Steps](#)
6. [October ACE Round 2006](#)
7. [ACE Conditions](#)

Main

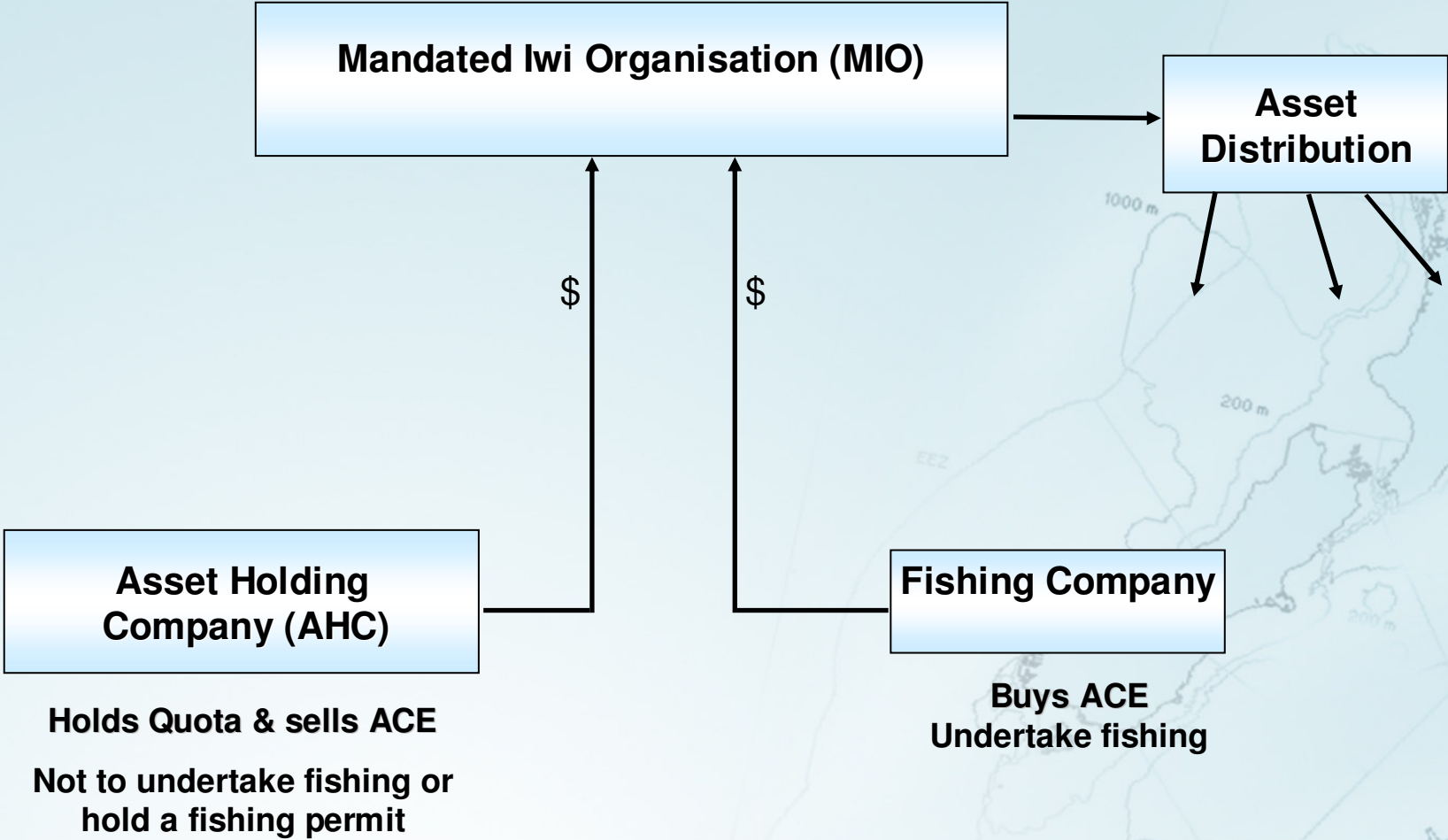


Allocation Assessment & Approval Flowchart



Step 10 – Asset Transfers
 FishServe transfers agreement based quota shares to AHC of MIO.

Iwi Development



Allocation to Iwi

TE OHU
KAIMOANA

What Progress?

- Transferred some of each Iwi's assets to 6 MIO in Sept 2005
- Transferred some of each Iwi's assets to 33 MIO by 30 September 2006
- Transferred 60% of Fisheries Settlement assets

[Contents](#)

Residual Allocation Work Programs

TE OHU
KAIMOANA



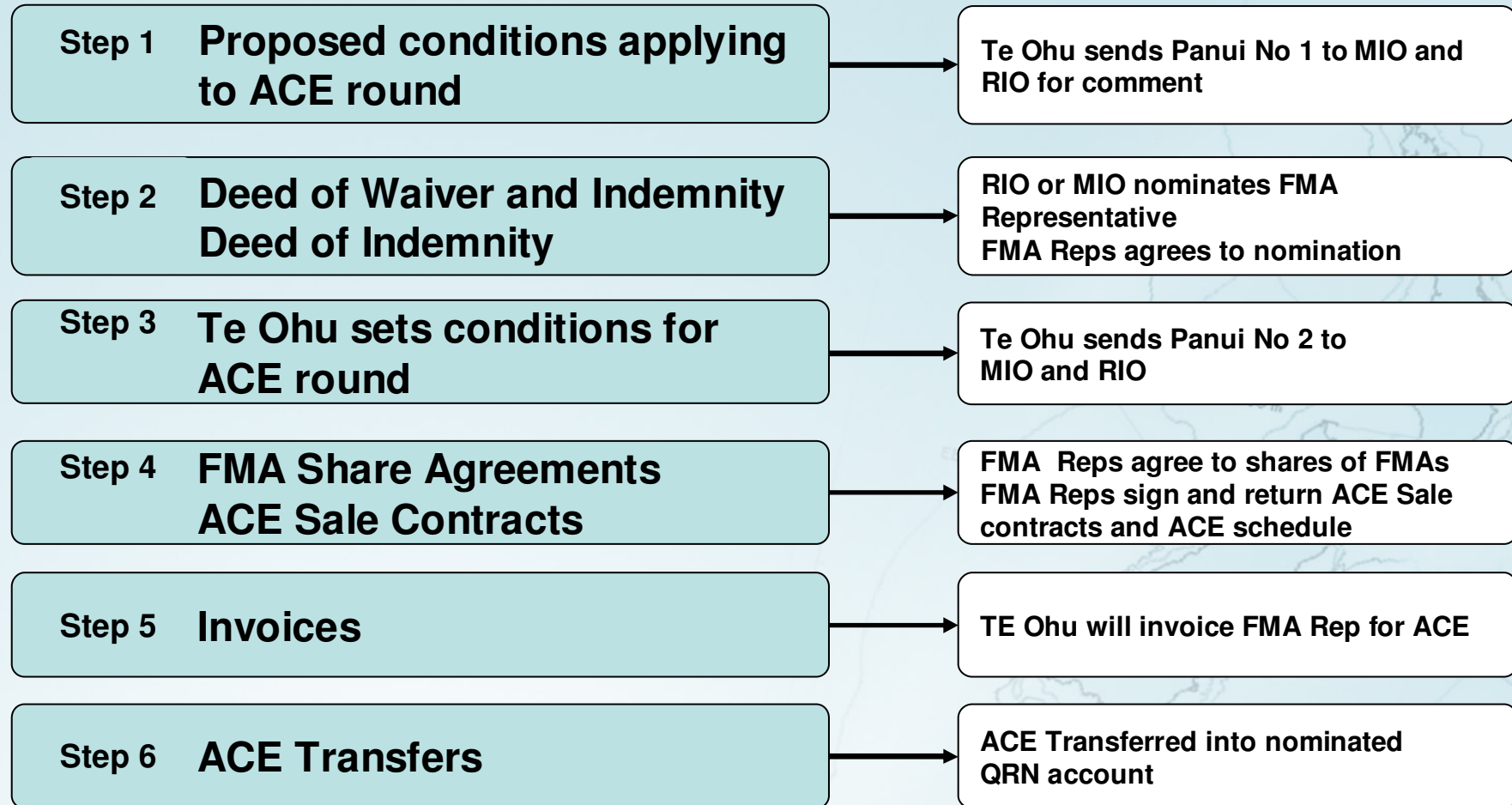
What's next?

- Complete MIO approvals
- Assist in completion of quota share agreements or “coastline agreements”
- Conduct ongoing ACE Rounds whilst Te Ohu holds Settlement quota shares

[Contents](#)



Key ACE Round Steps



October ACE Round 2006

TE OHU
KAIMOANA

Step 1 Proposed conditions applying to ACE round

Step 2 Deed of Waiver and Indemnity
Deed of Indemnity

Step 3 Te Ohu sets conditions for ACE round

Step 4 FMA Share Agreements
ACE Sale Contracts

Step 5 Invoices

Step 6 ACE Transfers

Panui # 1
(10 returns to date)

Panui # 2
(Delivery date 19th October)

Delivered as soon as ACE
Sale contract returned

ACE transferred as soon as
payment confirmed

Contents

ACE Conditions

- How much ACE is available?
 - Depends on Minister's TACC decisions and CSO shelving / research proposals
- What conditions apply to harvesting?
 - Requirements by Minister through regulation and TACC approvals
 - Agreed measures by CSOs
- Critical that these conditions remain attached to ACE sold as delivery needed to maintain size of fishery, ongoing approval to catch and flexibility of operations

Key ACE Round Steps

